



Dive Shop Package 3

Teaching courses, own a resort or simply need to service a lot of customers. Package 3 offers 18 CFM of air or nitrox.

The Dive Shop package 3 includes the Compact model 18 with 2 compressors in the cabinet that can produce air or 32% nitrox at 18 CFM. This unique package will supply air at 9 CFM or 40% nitrox if only one of the compressors is used in the cabinet. During nitrox production the supplied LP 280 Nitrox Generator is used to feed the Compact with nitrox. This system is our most cost effective nitrox production package at 18 CFM.



Includes:

- Nuvair LP 280
- Nuvair Compact 18
- 8 Storage Tanks
- 2 Bank Fill Panel
- 2 Fill Whips
- H.P. Hoses

Options:

- Additional Storage Tanks
- 4 Bank Nitrox Panel Upgrade
- Trimix
- Fill Analyzer for Panel

Advantages

- Simplest, Most Cost Effective Nitrox Systems Available
- Supply LP Nitrox Containing 21 – 40% Oxygen
- None of the Costs, Hassles, or Hazards of O₂ Blending
- Rotary Screw LP Compressor Provides Quiet Operation and Low Maintenance

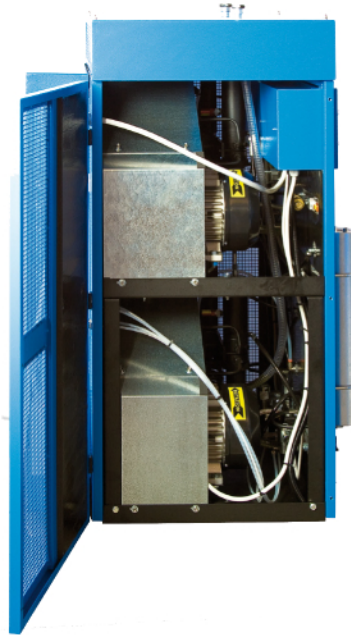
Features

- Nuvair Nitrox Membrane System with (2) O₂ Analyzers
- Automatic Shut Down for High Pressure and Temperature
- Automatic Condensate Drains
- Refrigerated Air Dryer for Long Filter Life
- Hankison LP Filtration for Membrane System

Nitrox Generator Model		LP 280
Part Number		7060**
Physical Specifications*	Height	48 in (122 cm)
	Width	59 in (150 cm)
	Depth	30 in (76 cm)
	Weight	635 lbs (288 kg)
	Horsepower	10 hp (7.5 kW)
Full Load Amps	440 V - E3 - 50 or 60 Hz	16 A
	380 V - E3 - 50 or 60 Hz	19 A
	230 V - E3 - 50 or 60 Hz	30 A
LP Compressor	Capacity @ 175 psi	30 CFM (850 L/min.)
Membrane Input	Operating Pressure	90-175 psi (6-12 bar)
	Supply Air Volume	8-30 SCFM (212-850 L/min.)
	Optimum Temperature	110 +/- 5° F (43 +/- 3° C)
Rated to Supply	F.A.D. for 40% O ₂	10 CFM (280 L/min.)
	F.A.D. for 36% O ₂	12.5 CFM (350 L/min.)
	F.A.D. for 32% O ₂	17 CFM (480 L/min.)

Coltri/Nuvair Compact (Model 18)

The Compact model 18 compressor package is a cabinet with (2) 9 CFM compressors inside it. These compressors are used in tandem to produce 18 CFM of air or nitrox with the LP 280 Nitrox Generator. Additionally these compressors could run independent of each other for producing 9CFM of air and 9 CFM of nitrox at the same time with some customizing by Nuvair.



Model	MCH32 / 18
Filling Time*	Approx. 3.7 Minutes
Cubic Feet/Minute	18.4 FAD 21.6 SCFM*
Liters/Minute	520 FAD
Motor Options	Three Phase
230 V - E1 - 50 or 60 Hz	N/A
230 V - E3 - 50 or 60 Hz	2 x 20 Amp (Part# 8036.2)**
440 V - E3 - 50 or 60 Hz	2 x 10 Amp (Part# 8036.3)**
Motor Power	2 x 7.5 hp (5.5 kw)
Max Operating Pressure	5000 PSI (345 Bar)
RPM	1550
Number of Stages	3
Number of Fill Hoses	4
Condensate Drain	Automatic
Fill Pressure Stop	Automatic
Sound Level @ 3 Meters	75 dB
Dimensions: (H x W x D)	53 in x 35 in x 34 in (133 x 89 x 85 cm)
Weight	673 lbs (306 kg)
Lubrication	Splash Lubrication, capacity 2 x 1.6 qts.
Air Quality	DIN 3188 - CGA Grade E - NFPA 1500 - EN12021

Features

- Motor Starter
- Automatic Condensate Drains
- Dial-A-Pressure Switch
- Hour Meter
- Semi-Sound Proofed Cabinet
- External Oil Sight Gauge
- Grade E Filtration

Options:

- Visual CO/Moisture Indicator
- Additional Filtration