



# Compressors for Paintball and Air Guns Catalog

*The most convenient, efficient and effective way to fill your high pressure tanks.*





# TABLE OF CONTENTS

- Ordering ..... 1
- High Pressure Compressors
  - Coltri / Nuvair MCH4 Compressor.....2
  - Coltri / Nuvair MCH6 Portable Compressors.....3
  - Nuvair MCH6 Compact Portable Compressors.....4
  - Coltri / Nuvair Standard Electric Compressors.....5
  - Nuvair MCH13 / 16 Mini Tech Compressors.....6
  - Coltri / Nuvair MCH13 / 16 Compact EVO Compressors.....7
  - Coltri / Nuvair MCH13 / 16 Super Silent EVO Compressors.....8
  - Coltri MCH22 / 30 / 36 Open Vertical Compressors.....9
  - Coltri MCH22 / 30 / 36 Enclosed Vertical Compressors.....10
- Paintball Packages
  - Nuvair Package 1.....11
  - Nuvair Package 2.....12
  - Nuvair Package 3.....13
  - Nuvair Package 4.....14
  - Nuvair Package 5.....15
- Compressor Oil.....16
- Fill Stations.....17
- Air Storage.....18
- Accessories.....19

# ORDERING

## NUVAIR TERMS AND CONDITIONS

### Open Terms

A 50% deposit at time of order is required; the balance is due prior to shipping. Open billing is at the sole discretion of Nuair and requires pre-approval by Nuair. Standard open account terms are net 30 days from the date of invoice. Should a buyer neglect to pay Nuair on time or create doubt of the buyer's financial responsibility, Nuair has the right to revoke any terms granted.

### Payment Terms for New Accounts and Online Orders

Orders made over the Internet or from new customers require pre-payment before shipping in the form of a credit card, company check, PayPal, wire transfer or cash.

If you are interested in net 30 terms, please contact Nuair for a credit application. Nuair uses several outside service bureaus to determine company or personal credit worthiness and does not guarantee credit terms will be made available to new or returning customers.

Nuair does business in US dollars. Any orders from outside the US may require the purchaser to cover additional bank charges from wiring fees to notary services. Payment using personal checks are accepted by Nuair; however, we will not ship until the funds have been received in our bank account. Returned checks will be assessed a \$35.00 handling charge on all non-sufficient funds. Additionally, Nuair may require pre-payment for any further transactions before shipping future shipments.

### Custom and Special-Order Items

Custom built products and products requiring non-inventory parts require payment in advance from customers who do not have credit terms with Nuair. These products are sold as-is to everyone and are not cancelable or returnable for any reason.

### Freight

FOB Oxnard, California. We use multiple shipping companies to ensure the quality service and good rates for our customers.

### Orders

You may purchase through Nuair by using our online store, email, phone, walk-in or fax. When in doubt, or if you need special attention for your order, contact a Nuair sales associate. Order confirmations are sent out via email or fax. *Information within this catalog is subject to change without notice.*



1600 Beacon Place, Oxnard, CA 93033 USA  
phone +1 805 815 4044 | fax +1 805 486 0900  
[www.nuair.com](http://www.nuair.com) | [info@nuair.com](mailto:info@nuair.com)

# NUVAIR MCH4 COMPRESSOR

The compact dimensions and light weight of this compressor make it very easy to transport and operate. Using a 110 V, 20 amp plug, this compressor is commonly used to fill air rifle tanks, single cylinders at home, on boats or on dive trips. Fill hose and air filtration system included.

## FEATURES

- Excellent portability
- Grade D air filtration

## OPTIONS

- Pressure switch
- Hour meter
- Stainless steel frame
- Visual CO / moisture indicator
- Auto drains
- Grade E breathing air filtration
- Can be set at 4500 psi max operating pressure but only processes 1.1 CFM)

## SPECIFICATIONS

SKU: 8012	
Fill Time*	23 min
Charging Rate*	2 SCFM (57 L/min)
CFM FAD	1.5 CFM (42 L/min)
110 V / E1 / 60 Hz	20 amps**
Power	2 hp (1.5 kW)
Max Operating Pressure	3260 psi (225 bar)
RPM	1420
Number of Stages	4
Number of Fill Hoses	1
Dimensions (L x W x H)	27 x 15 x 16 in (69 x 38 x 40 cm)
Weight	90 lbs (41 kg)
Lubrication	Splash lubrication, capacity 12 oz
Air Quality	CGA Grade D (Grade E is optional)



\*Based on 80 cu ft cylinder from 500 to 3000 psi. \*\* Requires 21 amp breaker and #10 wire.

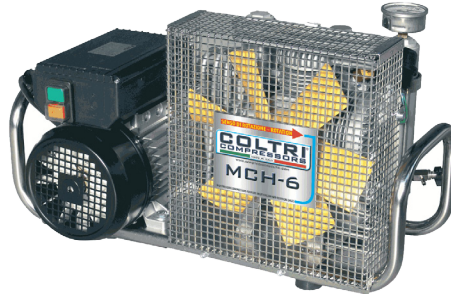
# COLTRI / NUVAIR MCH6 PORTABLE HP COMPRESSORS

## FEATURES

- Excellent portability
- 4500 psi (310 bar) max pressure
- Grade E breathing air filtration
- Tach hour meter standard on gas unit

## OPTIONS

- Pressure switch
- Automatic condensate drains
- Hour meter
- Stainless steel frame
- Visual CO / moisture indicator
- Inverter drive for use with smaller generators



The MCH6 is designed for filling paintball, scuba or SCBA tanks, one at a time. The compressors are not engineered or manufactured for continuous duty filling of storage tanks or cascade systems of any kind.

## SPECIFICATIONS

	MCH6/3	MCH6/3.5E	MCH6/3.5G
Fill Time*	Approx 23 min	Approx 19 min	Approx 19 min
Charging Rate*	3.4 SCFM (80 L/min)	4.2 SCFM (100 L/min)	4.2 SCFM (100 L/min)
CFM FAD	2.8 CFM (80 L/min)	3.5 CFM (100 L/min)	3.5 CFM (100 L/min)
Motor	Single-phase electric	Three-phase electric	Honda gas 5.5 hp (4.1 kW) SKU: 8013
115 V / E1 / 60 Hz**	29 amps 3 hp (2.2 kW) SKU: 8015	N/A	N/A
208-230 V / E1 / 60 Hz**	17 amps 3 hp (2.2 kW) SKU: 8014.1	N/A	N/A
208-230 V / E3 / 60 Hz**	N/A	12 amps 4 hp (3 kW) SKU: 8016.2	N/A
380-415 V / E3 / 50 Hz	N/A	6.7 amps 4 hp (3 kW) SKU: 8016.3	N/A
440-480 V / E3 / 60 Hz**	N/A	6.4 amps 4 hp (3 kW) SKU: 8016.3	N/A
Max Operating Pressure	4500 psi (310 bar)	4500 psi (310 bar)	4500 psi (310 bar)
RPM	2240	2800	2800
Number of Stages	4	4	4
Number of Fill Hoses	1	1	1
Condensate Drain	Manual	Manual	Manual
Sound Level @ 3 Meters	82 dB	83 dB	87 dB
Dimensions (L x W x H)	27 x 15 x 16 in (69 x 38 x 41 cm)	26 x 15 x 15 in (66 x 38 x 38 cm)	31 x 27 x 15 in (79 x 69 x 38 cm)
Weight	90 lbs (41 kg)	88 lbs (40 kg)	84 lbs (38 kg)
Lubrication	Splash lubrication, capacity 12 oz		
Air Quality	DIN 3188 – CGA Grade E – NFPA 1500 – EN12021		

\*Based on 80 cu ft cylinder from 500 to 3000 psi. \*\*For information on 50 Hz models, contact your sales representative.

# COLTRI / NUVAIR COMPACT PORTABLE HP COMPRESSORS

The sturdy enclosure and easily accessible lifting handles on this series of compressors makes it ideal for portable applications. It is available in a full range of electric and gas power for filling cylinders at home, at the dive shop or on boats. Fill hose and air filtration system included.

## FEATURES

- Excellent portability
- 4500 psi (310 bar) max pressure
- Grade E breathing air filtration
- Hour meter standard on gas unit
- Protective frame

## OPTIONS

- Pressure switch
- Automatic condensate drains
- Hour meter
- Stainless steel frame
- Visual CO / moisture indicator
- Inverter drive for use with small generators



The MCH6 is designed for filling paintball, scuba or SCBA tanks one at a time. The compressors are not engineered or manufactured for continuous duty filling of storage tanks or cascade systems of any kind.

## SPECIFICATIONS

	MCH6/3E	MCH6/3.5E	MCH6/3.5G
Fill Time*	Approx 23 min	Approx 19 min	Approx 19 min
Charging Rate*	3.4 SCFM (96 L/min)	4.2 SCFM (119 L/min)	4.2 SCFM (119 L/min)
CFM FAD	2.8 CFM (96 L/min)	3.5 CFM (100 L/min)	3.5 CFM (100 L/min)
Motor	Single phase electric	Three-phase Electric	Honda Gas SKU: 8013-C
115 V / E1 / 60 Hz	28 amps SKU: 8015-C	N/A	N/A
208-230 V / E1 / 60 Hz**	14 amps SKU: 8014.1-C	N/A	N/A
208-230 V / E3 / 60 Hz	N/A	11 amps SKU: 8016.2-C**	N/A
Driven By	3 hp (2.2 kW)	4 hp (3 kW)	6.5 hp (4.85 kW)
Max Operating Pressure	4500 psi (310 bar)	4500 psi (310 bar)	4500 psi (310 bar)
RPM	2240	2800	2800
Number of Stages	4	4	4
Number of Fill Hoses	1	1	1
Condensate Drain	Manual	Manual	Manual
Sound Level @ 3 Meters	82 dB	83 dB	87 dB
Dimensions (L x W x H)	14.5 x 29 x 19 in (37 x 74 x 48 cm)	14.5 x 29 x 19 in (37 x 74 x 48 cm)	14.5 x 29 x 19 in (37 x 74 x 48 cm)
Weight	126 lbs (57 kg)	126 lbs (57 kg)	121 lbs (55 kg)
Lubrication	Splash lubrication, capacity 12 oz		
Air Quality	DIN 3188 – CGA Grade E – NFPA 1500 – EN12021		

\*Based on 80 cu ft cylinder from 500 to 3000 psi. \*\*For information on 50 Hz models, contact your sales representative.

# COLTRI / NUVAIR STANDARD ELECTRIC COMPRESSORS

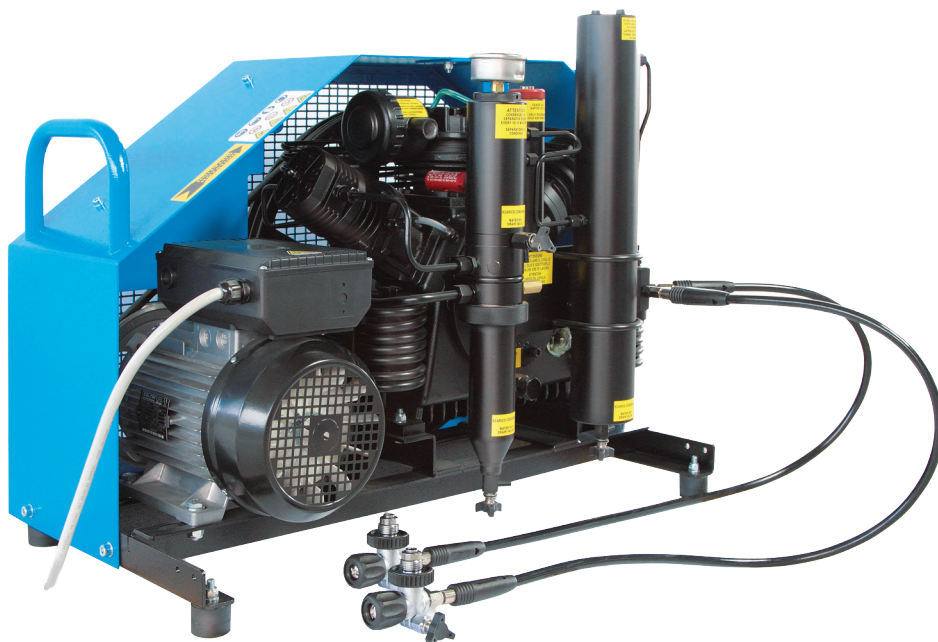
The Nuvair Standard Electric uses a pumping unit that is made from top quality materials; connecting rods from aluminum alloy, stainless steel intercoolers and aftercoolers that are more than four meters in length, and cylinders of special cast iron. The electric motor uses an aluminum housing to keep weight to a minimum, making the station very compact.

## FEATURES

- 5000 psi (345 bar) max pressure
- Grade E filtration
- 2 fill whips
- Electric
- Stainless steel intercoolers

## OPTIONS

- Motor starter
- Automatic condensate drains
- Pressure switch
- Hour meter
- High temp shutdown
- Low oil shutdown
- Interstage pressure gauges
- Stainless frame
- Visual CO / moisture indicator



## SPECIFICATIONS

	MCH13	MCH16
Fill Time*	Approx 11 min	Approx 9 min
Charging Rate*	8.4 SCFM (238 L/min)	11.3 SCFM (320 L/min)
CFM FAD	7 CFM (200 L/min)	9.4 CFM (266 L/min)
Motor	Single or three-phase electric	Three-phase
208-230 V / E1 / 50 or 60 Hz**	26 amps SKU: 8020.1	N/A
208-230 V / E3 / 50 or 60 Hz**	17 amps SKU: 8019.2	22 amps SKU: 8022.2
400 V / E3 / 50 Hz	10 amps SKU: 8019.6	15 amps SKU: 8022.6
440 V / E3 / 60 Hz	7 amps SKU: 8019.3	13 amps SKU: 8022.6
Driven By	5.5 hp (4 kW)	7.5 hp (5.5 kW)
Max Operating Pressure	5000 psi (345 bar)	5000 psi (345 bar)
RPM	1200	1450
Number of Stages	3	3
Number of Fill Hoses	2	2
Condensate Drain	Manual	Manual
Sound Level @ 3 Meters	81 dB	82 dB
Dimensions (L x W x H)	18 x 34 x 25 in (45 x 86 x 64 cm)	18 x 34 x 25 in (45 x 86 x 64 cm)
Weight	218 lbs (99 kg)	218 lbs (99 kg)
Lubrication	Splash lubrication, capacity 1.8 L	
Air Quality	DIN 3188 – CGA Grade E – NFPA 1500 – EN12021	

\*Based on 80 cu ft cylinder from 500 to 3000 psi. \*\*For information on 50 Hz models, contact your sales representative.

# NUVAIR MINI TECH COMPRESSOR

The Mini Tech is our go-to compressor set up for a wide variety of applications in both breathing air and industrial air use. Compact design and fold away handles make for easy lifting and portability of the compressor. Onboard grade E air purification insures breathing air quality standards. A wide variety of customized options to meet individual needs and are listed below.

## FEATURED

- 5000 psi (345 psi) max pressure
- Grade E filtration
- (2) fill whips
- Electric motor, Honda gas or diesel engine
- Stainless steel intercoolers
- 4 lifting handles
- All important parts are protected inside frame
- Superior vibration isolation
- Powder coated marine grade aluminum frame

## OPTIONS

- Motor starter / electric start
- Automatic condensate drains
- Pressure switch
- Hour meter
- High temp shutdown
- Upgraded filtration
- Stainless frame
- Lifting eyes
- Low oil shutdown
- Tropical block w/ oil pump
- Visual CO / moisture indicator
- Interstage pressure gauges



pictured with multiple options

## SPECIFICATIONS

	MCH13	MCH16
Fill Time*	Approx 11 min	Approx 9 min
Charging Rate*	8.4 SCFM (238 L/min)	11.3 SCFM (320 L/min)
CFM FAD	7 CFM (200 L/min)	9.4 CFM (266 L/min)
208-230 V / E1 / 60 Hz**	23 amps SKU: 8040.1	30.3 amps SKU: 8037.1
208-230 V / E3 / 60 Hz**	13.1 amps SKU: 8040.2	19.4 amps SKU: 8037.2
380-415 V / E3 / 50 Hz	8 amps SKU: 8040.6	11 amps SKU: 8037.6
440-480 V / E3 / 60 Hz	6 amps SKU: 8040.3	9 amps SKU: 8037.3
Electric Motor Size	5.5 hp (4 kW)	7.5 hp (5.5 kW)
Honda Gas	8.5 hp (6.3 kW) SKU: 8039	11.7 hp (8.7 kW) SKU: 8038
Yanmar Diesel	N/A	9.3 hp (6.8 kW) SKU: 8038-DY
Max Operating Pressure	5000 psi (345 bar)	5000 psi (345 bar)
RPM	1200	1450
Number of Stages	3	3
Number of Fill Hoses	2	2
Condensate Drain	Manual	Manual
Sound Level @ 3 Meters	81-96 dB	82-96 dB
Dimensions (L x W x H)	45.5 x 22.25 x 25.75 in (116 x 57 x 65 cm)	45.5 x 22.25 x 25.75 in (116 x 57 x 65 cm)
Weight	320-421 lbs (145-191 kg)	320-421 lbs (145-191 kg)
Lubrication	Splash lubrication, capacity 1.8 L	
Air Quality	DIN 3188 – CGA Grade E – NFPA 1500 – EN12021	

\*Based on 80 cu ft cylinder from 500 to 3000 psi. \*\*For information on 50 Hz models, contact your sales representative.

# COLTRI / NUVAIR COMPACT EVO HP COMPRESSOR

The Compact Series includes a semi-sound proofed filling station. The compressor switches off automatically when the pressure level set by the operator is reached. Condensate is discharged automatically. External access simplifies oil level monitoring and changes. The Compact is offered as an EVO model with interstage pressure gauges, high temperature and low oil shutdown included.

## FEATURES

- Motor starter
- Automatic condensate drains
- Dial-a-pressure switch
- Hour meter
- Semi-soundproofed cabinet
- External oil sight gauge
- Grade E filtration
- Automatic stop
- Emergency stop
- Interstage pressure gauges
- High temp shutdown
- Low oil shutdown



## OPTIONS

- Visual CO / moisture indicator
- CO Analyzer
- Moisture Analyzer
- Filtration upgrade
- 6000 psi upgrade
- Pressure lubricated block for tropical locations available

## SPECIFICATIONS

	MCH13	MCH16
Fill Time*	Approx 11 min	Approx 9 min
Charging Rate*	8.4 SCFM (238 L/min)	11.3 SCFM (320 L/min)
CFM FAD	7 CFM (200 L/min)	9.4 CFM (266 L/min)
Motor	Single or three-phase electric	Single or three-phase electric
208-230 V / E1 / 60 Hz**	25.2 amps 5.5 hp (4 kW) SKU: 8031.1	28.5 amps 7.5 hp (5.5 kW) SKU: 8032.1 / 8033.1
208-230 V / E3 / 60 Hz**	12.89 amps 5.5 hp (4 kW) SKU: 8031.2	21.8 amps 7.5 hp (5.5 kW) SKU: 8032.2 / 8033.2
380-415 V / E3 / 50 Hz	7.61 amps 5.5 hp (4 kW) SKU: 8031.6	12.6 amps 7.5 hp (5.5 kW) SKU: 8032.6 / 8033.6
440-480 V / E3 / 60 Hz	7.61 amps 5.5 hp (4 kW) SKU: 8031.3	12.6 amps 7.5 hp (5.5 kW) SKU: 8032.3 / 8033.3
Max Operating Pressure	5000 psi (345 bar)	5000 psi (345 bar)
RPM	1300	1450
Number of Stages	3	3
Number of Fill Hoses	2	2
Condensate Drain	Automatic	Automatic
Fill Pressure Stop	Automatic	Automatic
Sound Level @ 3 Meters	79 dB	81 dB
Dimensions (L x W x H)***	41.5 x 27.75 x 31.75 in (105 x 71 x 80.1 cm)	41.5 x 27.75 x 31.75 in (105 x 71 x 80.1 cm)
Weight	450 lbs (204 kg)	450 lbs (204 kg)
Lubrication	Splash lubrication, capacity 1.8 L	
Air Quality	DIN 3188 – CGA Grade A – NFPA 1500 – EN12021	

\*Based on 80 cu ft cylinder from 500 to 3000 psi. \*\*For information on 50 Hz models, contact your sales representative. \*\*\*Single phase enclosure 33 in x 42 in x 28 in (84 x 105 x 70 cm).

# COLTRI / NUVAIR SUPER SILENT EVO HP COMPRESSOR



The Super Silent EVO is built in a resiliently soundproofed cabinet. From just a few feet away, only a sound level below 70 dB can be heard. It is a fully automatic station with a complete range of instrumentation for ease of operation. The pump is a three-stage unit with cylinders made of special heavy duty cast iron. The compressed air is cooled with a stainless steel aftercooler that ensures the air entering the filter system is only 25°F hotter than the intake air. There are safety relief valves for each stage of compression. It has two condensate separators and one filter chamber with a replaceable cartridge. This ensures the air compressed into the cylinders is clean and free of contaminants.

## FEATURES

- Motor starter
- Automatic condensate drains
- Dial-a-pressure switch
- Hour meter
- Interstage pressure gauges
- High temp shutdown
- Low oil shutdown with external sight gauge
- Soundproofed cabinet
- External oil sight gauge
- Grade E filtration
- Automatic stop

## OPTIONS

- Visual CO / moisture indicator
- Additional filtration

## SPECIFICATIONS

	MCH13	MCH16
Fill Time*	Approx 11 min	Approx 9 min
Charging Rate*	8.4 SCFM (238 L/min)	11.3 SCFM (320 L/min)
CFM FAD	7 CFM (200 L/min)	9.4 CFM (266 L/min)
Motor	Single or three-phase electric	Three-phase electric
208-230 V / E1 / 60 Hz	25 amps SKU: 8035.1-13	N/A
208-230 V / E3 / 60 Hz**	17 amps SKU: 8035.2-13	22 amps SKU: 8035.2
380-415 V / E3 / 50 Hz	9 amps SKU: 8035.6-13	13 amps SKU: 8035.6
440-480 V / E3 / 60 Hz	8 amps SKU: 8035.3-13	13 amps SKU: 8035.3
Driven By	5.5 hp (4 kW)	7.5 hp (5.5 kW)
Max Operating Pressure	5000 psi (345 bar)	5000 psi (345 bar)
RPM	1350	1550
Number of Stages	3	3
Number of Fill Hoses	2	2
Condensate Drain	Automatic	Automatic
Fill Pressure Stop	Automatic	Automatic
Sound Level @ 3 Meters	66 dB	69 dB
Dimensions (L x W x H)	35 x 33.5 x 52.5 in (90 x 85 x 133 cm)	35 x 33.5 x 52.5 in (90 x 85 x 133 cm)
Weight	466 lbs (211 kg)	488 lbs (221 kg)
Lubrication	Pressure lubrication, capacity 1.8 L	
Air Quality	DIN 3188 – CGA Grade E – NFPA 1500 – EN12021	

\*Based on 80 cu ft cylinder from 500 to 3000 psi. \*\*For information on 50 Hz models, contact your sales representative.

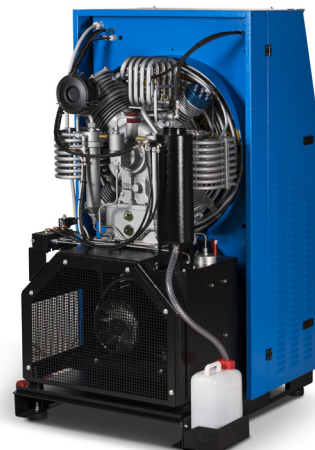
# COLTRI / NUVAIR MCH22 / 30 / 36

## OPEN HP COMPRESSOR

The Open Vertical MCH22, MCH30 and MCH36 compressors are designed for high use in hot, humid conditions and are rated for continuous duty use up to 6000 psi (414 bar). Equipped with the MCH22, MCH30 or MCH36 four-stage compressor block with a charging rate up to 27 SCFM\* (764 L/min). Purchase, maintenance and operation costs are significantly lower than similar sized compressors in the marketplace.

### FEATURES

- Open configuration for easy access and cool running
- Dial-a-pressure auto shutdown
- Soft start (Star / Delta) electric switchboard with hour meter and emergency stop button
- Automatic condensate drains and auto stop
- Phase controller that prohibits reverse rotation
- Oil level switch / auto shutoff
- Cabinet temperature thermostat / auto shutoff
- Stage and lubricant oil pressure gauges
- 60,000 cu ft dual filtration (Grade E)



### OPTIONS

- Visual CO / moisture indicator
- CO, CO<sub>2</sub> or H<sub>2</sub>S Alarm Analyzer
- Additional filtration
- Moisture Analyzer
- Refrigerated air dryer

### SPECIFICATIONS

	MCH22	MCH30	MCH36
Fill Time*	Approx 5 min	Approx 4 min	Approx 3 min
Charging Rate*	15.8 SCFM (447 L/min)	20.4 SCFM (577 L/min)	27 SCFM (764 L/min)
CFM FAD	13.2 CFM (374 L/min)	17 CFM (481 L/min)	22.5 CFM (637 L/min)
Motor	Single and three-phase	Three-phase	Three-phase
208-230 V / E1 / 60 Hz	46 amps 10 hp (7.5 kW) SKU: 8051.1	N/A	N/A
208-230 V / E3 / 60 Hz**	28 amps 10 hp (7.5 kW) SKU: 8051.2	31 amps 15 hp (11 kW) SKU: 8042.2	48 amps 20 hp (15 kW) SKU: 8044.2
380-415 V / E3 / 50 Hz	17 amps 10 hp (7.5 kW) SKU: 8051.6	18 amps 15 hp (11 kW) SKU: 8042.6	29 amps 20 hp (15 kW) SKU: 8044.6
440-480 V / E3 / 60 Hz	17 amps 10 hp (7.5 kW) SKU: 8051.3	16 amps 15 hp (11 kW) SKU: 8042.3	25 amps 20 hp (15 kW) SKU: 8044.3
Working Pressure	6000 psi (414 bar)	6000 psi (414 bar)	6000 psi (414 bar)
RPM	880	1100	1300
Number of Stages	4	4	4
Number of Fill Hoses	4	4	4
Condensate Drain	Automatic	Automatic	Automatic
Fill Pressure Stop	Automatic	Automatic	Automatic
Sound Level @ 3 Meters	76 dB	76 dB	76 dB
Dimensions (L x W x H)	31 x 39 x 61 in (78 x 99 x 155 cm)	31 x 39 x 61 in (78 x 99 x 155 cm)	31 x 39 x 61 in (78 x 99 x 155 cm)
Weight	913 lbs (414 kg)	915 lbs (415 kg)	950 lbs (431 kg)
Lubrication	Pressure Lubrication, capacity 4 L		
Air Quality	DIN 3188 – CGA Grade E – NFPA 1500 – EN12021		

\*Based on 80 cu ft cylinder from 500 to 3000 psi. \*\*For information on 50 Hz models, contact your sales representative.

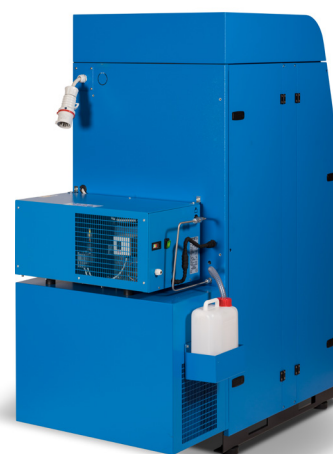
# COLTRI / NUVAIR MCH22 / 30 / 36

## ENCLOSED AND SILENCED HP COMPRESSOR

High volume facilities where sound may be an issue should look at our Enclosed & Silenced 27 SCFM\* (764 L/min) charging rate compressor, rated for continuous duty at up to 6000 psi (414 bar). Unsurpassed in quality, reliability and price, the Enclosed and Silenced package is designed for high use in work areas where noise can not be tolerated.

### FEATURES

- Enclosed configuration for reduced sound levels
- Dial-a-pressure auto shutdown
- Soft start (Star / Delta) electric switchboard with hour meter and emergency stop button
- Automatic condensate drains and auto stop
- Phase controller that prohibits reverse rotation
- Oil level switch / auto shutoff
- Cabinet temperature thermostat / auto shutoff
- Stage and lubricant oil pressure gauges
- 60,000 cu ft dual filtration (Grade E)



### OPTIONS

- Visual CO / moisture indicator
- CO, CO<sub>2</sub> or H<sub>2</sub>S Alarm Analyzer
- Additional filtration
- Moisture Analyzer
- Refrigerated air dryer

### SPECIFICATIONS

	MCH22	MCH30	MCH36
Fill Time*	Approx 5 min	Approx 4 min	Approx 3 min
Charging Rate*	15.8 SCFM (447 L/min)	20.4 SCFM (577 L/min)	27 SCFM (764 L/min)
CFM FAD	13.2 CFM (374 L/min)	17 CFM (481 L/min)	22.5 CFM (637 L/min)
Motor	Single and Three-phase	Three-phase	Three-phase
208-230 V / E1 / 60 Hz	46 amps 10 hp (7.5 kW) SKU: 8052.1	N/A	N/A
208-230 V / E3 / 60 Hz**	28 amps 10 hp (7.5 kW) SKU: 8052.2	31 amps 15 hp (11 kW) SKU: 8043.2	48 amps 20 hp (15 kW) SKU: 8045.2
380-415 V / E3 / 50 Hz	17 amps 10 hp (7.5 kW) SKU: 8052.6	18 amps 15 hp (11 kW) SKU: 8043.6	29 amps 20 hp (15 kW) SKU: 8045.6
440-480 V / E3 / 60 Hz	17 amps 10 hp (7.5 kW) SKU: 8052.3	16 amps 15 hp (11 kW) SKU: 8043.3	25 amps 20 hp (15 kW) SKU: 8045.3
Working Pressure	6000 psi (414 bar)	6000 psi (414 bar)	6000 psi (414 bar)
RPM	880	1100	1300
Number of Stages	4	4	4
Number of Fill Hoses	4	4	4
Condensate Drain	Automatic	Automatic	Automatic
Fill Pressure Stop	Automatic	Automatic	Automatic
Sound Level @ 3 Meters	70 dB	70 dB	70 dB
Dimensions (L x W x H)	49 x 31.9 x 69 in (125 x 81 x 175 cm)	49 x 31.9 x 69 in (125 x 81 x 175 cm)	49 x 31.9 x 69 in (125 x 81 x 175 cm)
Weight	1108 lbs (503 kg)	1126 lbs (511 kg)	1160 lbs (526 kg)
Lubrication	Pressure lubrication, capacity 4 L		
Air Quality	DIN 3188 – CGA Grade E – NFPA 1500 – EN12021		

\*Based on 80 cu ft cylinder from 500 to 3000 psi. \*\*For information on 50 Hz models, contact your sales representative.

# NUVAIR PAINTBALL PACKAGES

## PACKAGE 1

Nuvair paintball packages are built to supply air to home users, small and large fields. We have taken and assembled our compressors with fill stations and storage options to meet the various paintball users needs. The five packages we offer are based on the amount of players active per day at your field.

**PACKAGE 1** is made for individual users and small shops. The Nuvair compressor comes with a rigid portable frame and an on/off fill valve; the line pressure is released with a manual bleed.

Gas or Electric  
\$3,777

### OPTIONS

- Scuba Fill Yoke \$90.00
- Automatic drains (for electric models) \$620
- Pressure switch (auto shutdown) \$175



### SPECIFICATIONS

	MCH6 / PK1E COMPACT	MCH6 / PK1E3 COMPACT	MCH6 / 3PK1G COMPACT
Fill Time*	Approx. 23 minutes	Approx. 19 minutes	Approx. 19 minutes
Charging Rate*	3.4 SCFM (96 L/min)	4.2 SCFM (119 L/min)	4.2 SCFM (119 L/min)
CFM FAD	2.8 CFM (80 L/min)	3.5 CFM (100 L/min)	3.5 CFM (100 L/min)
Motor	Single phase electric	Three-phase electric	Honda gas SKU: 8013-C
115 V / E1 / 60 Hz**	28 amps SKU: 8015-C	N/A	N/A
208-230 V / E1 / 60 Hz**	14 amps SKU: 8014.1-C	N/A	N/A
208-230 V / E3 / 60 Hz**	N/A	11 amps SKU 8016.2-C	N/A
Driven By	3 hp (2.2 kW)	4 hp (3 kW)	5.5 hp (4 kW)
Max Operating Pressure	4500 psi (310 bar)	4500 psi (310 bar)	4500 psi (310 bar)
RPM	2240	2800	2800
Number of Stages	4	4	4
Number of Fill Hoses	1	1	1
Condensate Drain	Manual	Manual	Manual
Sound Level @ 3 Meters	82 dB	83 dB	87 dB
Dimensions (L x W x H)	14.5 x 29 x 19 in (37 x 74 x 48 cm)	14.5 x 29 x 19 in (37 x 74 x 48 cm)	14.5 x 29 x 19 in (37 x 74 x 48 cm)
Weight	126 lbs (57 kg)	126 lbs (57 kg)	121 lbs (55 kg)
Lubrication	Pressure lubrication, capacity 11 oz		

\*Based on 80 cu ft cylinder from 500 to 3000 psi. \*\*For information on 50 Hz models, contact your sales representative. The MCH6 is designed for filling Paintball, SCUBA or SCBA tanks one at a time. The compressors are not engineered or manufactured for continuous duty filling of storage tanks or cascade systems of any kind.

# NUVAIR PAINTBALL PACKAGES

## PACKAGE 2

PACKAGE 2 is great for small to medium paintball fields. The Nuair Mini-Tech gas or electric can fill one or more storage tanks while providing ample air to the fill station. An optional pressure regulator can be mounted on the fill station or on the storage tank. Features include: 8.9 SCFM Mini-Tech compressor, PN1 Fill Panel, two tanks, two hoses, hardware and installation video.

Electric or Gas  
\$8,820 to \$8,920



### SPECIFICATIONS

	PK2G	PK2E
Compressor	Mini-Tech Gas	Mini-Tech Electric Electric 208-230 V / E1 or E3
Charging Rate*	8.9 SCFM (252 L/min)	8.4 SCFM (238 L/min)
CFM FAD*	7.4 CFM (210 L/min)	7 CFM (200 L/min)
Motor	7.5 hp Honda (5.5 kW)	5.5 hp (4 kW) Single or three-phase
Max Operating Pressure	5000 psi (345 bar)	5000 psi (345 bar)
RPM	1250	1250
Number of Stages	3	3
Condensate Drain	Manual	Manual
Sound Level @ 3 Meters	90 dB	81 dB
Lubrication	Splash lubrication, capacity 1.8 L	
Dimensions: (L x W x H)	22.5 x 44.75 x 25.75 in (56 x 114 x 61 cm)	
Number of Storage Tanks	2 - 4500 psi - 437 cu ft each bottle - with fittings and hoses	
Hose	8 ft. and 12 ft.	

### RECOMMENDED OPTIONS

Electric/Motor Starter	\$285.00	\$560.00
Auto Drains	\$920.00	\$920.00
Pressure Switch	\$175.00	\$175.00
Hour Meter	Standard	\$80.00
PN1R - Fill Station UPgrade	\$250.00	\$250.00
PN2 - Fill Station Upgrade	\$600.00	\$600.00

\*Based on 80 cu ft cylinder from 500 to 3000 psi.

# NUVAIR PAINTBALL PACKAGES

## PACKAGE 3

PACKAGE 3 is perfect for large paintball fields. The Nuvair 9 gas or electric can fill one or more storage tanks while providing a considerable volume of air to the fill station. The pressure regulator can be mounted on the fill station or on the storage tanks. The two-man fill station has two toggle actuated fill valves that relieve the line pressure when released. Installation video included.

Electric or Gas  
\$10,730 OR \$10,830



### SPECIFICATIONS

SPECIFICATIONS

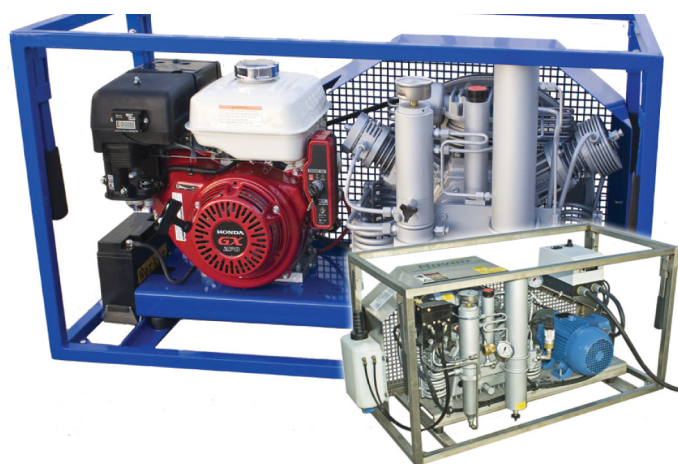
	PK3G	PK3E
Compressor	Mini-Tech Gas	Mini-Tech Electric Electric 208-230 V / E1 or E3
Charging Rate*	11.3 SCFM (320 L/min)	11.3 SCFM (320L/min)
CFM FAD*	9.4 CFM (266 L/min)	9.4 CFM (266 L/min)
Motor	11.7 hp Honda (8.7 kW)	7.5 hp (5.5 kW) single or three-phase
Max Operating Pressure	5000 psi (345 bar)	5000 psi (345 bar)
RPM	1550	1550
Number of Stages	3	3
Condensate Drain	Manual	Manual
Sound Level @ 3 Meters	96 dB	82.3 dB
Lubrication	Splash lubrication, capacity 1.8 L	
Dimensions: (L x W x H)	22.5 x 44.75 x 25.75 in (56 x 114 x 61 cm)	
Number of Storage Tanks	4 - 4500 psi - 437 cu ft each bottle with fittings and hoses	
Hose	8 ft. and 12 ft.	
	RECOMMENDED OPTIONS	
Electric/Motor Starter	\$285.00	\$633.00
Auto Drains	\$920.00	\$920.00
Pressure Switch	\$175.00	\$175.00
Hour Meter	Standard	\$80.00
Battery and Cable	\$105.00	N/A
PN4 - Four Tank Fill Station	\$360.00	\$360.00

\*Based on 80 cu ft cylinder from 500 to 3000 psi.

# NUVAIR PAINTBALL PACKAGES

## PACKAGE 4

PACKAGE 4 is great for large paintball fields with 100-200 recreational players. PK4 includes a Mini Tech 9 gas or electric 220 V powered 10.8 SCFM compressor, 6 storage tanks, hardware, Installation video, four-man filling panel with two fills regulated at 3000 psi and two fills unregulated at 4500 psi.



Electric or Gas  
\$11,840 or \$11,940



## SPECIFICATIONS

	PK4G	PK4E
Compressor	Mini-Tech Gas	Mini-Tech Electric Electric 208-230 V / E1 or E3
Charging Rate*	11.3 SCFM (320 L/min)	11.3 SCFM (320 L/min)
CFM FAD*	9.4 CFM (266 L/min)	9.4 CFM (266 L/min)
Motor	11.7 hp Honda (8.7 kW)	7.5 hp (5.5 kW) single or three-phase
Max Operating Pressure	5000 psi (345 bar)	5000 psi (345 bar)
RPM	1550	1550
Number of Stages	3	3
Condensate Drain	Manual	Manual
Sound Level @ 3 Meters	96 dB	82.3 dB
Lubrication	Splash lubrication, capacity 1.8 L	
Dimensions: (L x W x H)	22.5 x 44.75 x 25.75 in (56 x 114 x 61 cm)	
Number of Storage Tanks	6 - 4500 psi - 437 cu ft each bottle - with fittings and hoses	
Hose	8 ft. and 12 ft.	

## RECOMMENDED OPTIONS

Electric/Motor Starter	\$285.00	\$633.00
Auto Drains	\$920.00	\$920.00
Pressure Switch	\$175.00	\$175.00
Interstage Guages	\$320.00	\$320.00
Hour Meter	\$80.00	N/A
Battery and Cables	\$105.00	N/A

\*Based on 80 cu ft cylinder from 500 to 3000 psi.

# NUVAIR PAINTBALL PACKAGES

## PACKAGE 5

PACKAGE 5 is great for large paintball fields with 100-200 recreational players. PK5 includes a Vertical electric 208-480 V powered 20.4 or 27 SCFM compressor, 4 storage tanks, hardware, installation video, four-man filling panel with two fills regulated at 3000 psi and two fills unregulated at 4500 psi.



Electric or Diesel  
\$29,583 to \$38,598



## SPECIFICATIONS

	PK5E	PK5E	PK5D
Compressor	MCH30	MCH36	MCH36
Charging Rate*	20.4 SCFM (577 L/min)	27 SCFM (764 L/min)	27 SCFM (764 L/min)
CFM FAD*	17 CFM (481 L/min)	22.5 CFM (637 L/min)	22.5 CFM (637 L/min)
Motor	Three-phase electric	Three-phase electric	Kohler diesel 28.5 hp (21 kW)
208-230 V / E3 / 60 Hz	31 amps 15 hp (11 kW)	48 amps 20 hp (15 kW)	N/A
380-415 V / E3 50 Hz	18 amps 15 hp (11 kW)	29 amps (15 kW)	N/A
440-480 V / E3 / 60 Hz	16 amps 15 hp (11 kW)	29 amps (15 kW)	N/A
Max Operating Pressure	6000 psi (414 bar)	5000 psi (345 bar)	5000 psi (345 bar)
RPM	1100	1300	3000
Number of Stages	4	4	4
Condensate Drain	Automatic	Automatic	Automatic
Sound Level @ 3 Meters	76 dB	76 dB	82.3 dB
Lubrication	Splash lubrication, capacity 4.5 L		
Dimensions: (L x W x H)	31 x 39 x 61 in (78 x 99 x 155 cm)		
Number of Storage Tanks	4 - 6000 psi - 510 cu ft each bottle - with fittings and hoses		
Hose	30 ft.		

\*Based on 80 cu ft cylinder from 500 to 3000 psi.

## SPECIFICATIONS

Typical Properties	ASTM Test Method	Nuvair 751
SAE Grade	SAE J-300	40
ISO Grade	D2422	150
Viscosity		
@ 104°F, cSt	D445	146.5
Viscosity Index	D2770	90
Flash Point		
°F	D92	522°F
°C	D92	272°C
Pour Point		
°F	D97	-13°F
°C	D97	-25°C
Evaporation %	D972	1.0
Foaming Sequence I, II, III	D829	<10/0
Copper Corrosion	D130	1a
Specific Gravity	D4052	0.93
Demulsibility	D1401	Excellent
Carbon Residue %	D189	<0.01

## APPLICATION

Nuvair 751 is a diester/organic compound blend and was designed to be used at higher temperatures in reciprocating compressors where they will not varnish like many other petroleum and synthetic oils.

## CHARACTERISTICS

- Available in quart, one-gallon and five-gallon containers
- Outstanding thermal and oxidative stability
- Will not varnish or form carbon deposits
- Wide operating temperature range of 5°F to 445°F (-15°C to 230°C)
- Built in detergency action
- Extended oil life reduces oil disposal, thus increasing cost-effectiveness
- Not recommended for use in LP breathing air applications
- Rated by the manufacturer for use with nitrox up to 40% oxygen content\*

Caution: May affect some paint finishes, plastics and seals

## APPLICATION

Nuvair 800 is a high-viscosity synthetic oil using a highly stable triester base fluid. It is designed for use in reciprocating compressors under adverse conditions of high temperature and high pressure.

## CHARACTERISTICS

- Available in quart, one-gallon and five-gallon containers
- Wide operating temperature range of 5°F to 445°F (-15°C to 230°C)
- Outstanding thermal and oxidative stability
- Will not varnish or form carbon deposits
- Excellent heat transfer characteristics
- Low volatility and low toxicity
- Rated by the manufacturer for use with nitrox up to 40% oxygen content\*

Caution: May affect some paint finishes, plastics and seals.



\*Must be used properly and meet all conditions of use listed by Nuvair and Coltri.

# NUVAIR 800

## SYNTHETIC TRIESTER-BASED OIL

## SPECIFICATIONS

Typical Properties	ASTM Test Method	Nuvair 800
SAE Grade	SAE J-300	40
ISO Grade	D2422	150
Viscosity		
@ 104°F, cSt	D445	141.5
@ 212°F, cSt	D445	12.8
Viscosity Index	D2770	79
Flash Point		
°F	D92	535°F
°C	D92	279°C
Pour Point		
°F	D97	-20°F
°C	D97	-29°C
Auto Ignition		
°F	D1255	735°F
°C	D1255	391°C
Evaporation %	D972	<1.0
Water Solubility		
<0.01 g/l @ 20°C		Insoluble
Specific Gravity		0.97

# NUVAIR PAINTBALL FILL STATIONS

## SINGLE TO FOUR FILL OUTLETS IN STANDARD AND CUSTOM CONFIGURATIONS

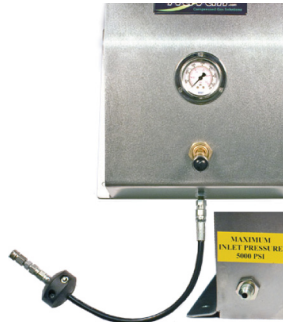
Nuvair fill stations are used worldwide on commercial paintball fields and by independent paintball players looking to fill their own tanks. We have tailored packages and can build a custom package to meet the needs of field operators with special considerations. All Nuvair fill stations are constructed of stainless steel, high quality fittings and custom workmanship. Our fill hoses use a rubber weight to prevent it from whipping if pressurized.

### FEATURES

- Stainless steel
- High quality fittings
- Fill pressure gauges
- Working pressure to 5000 psi
- Stainless steel tubing
- Rubber weight on fill hose

### OPTIONS

- Inlet check valve
- Regulator
- Custom design



The single fill station can be installed and operated at the paintball field or in a shop. The station includes a toggle actuated fill valve that relieves the line pressure when released. The maximum input pressure is 5000 psi.



The single regulated fill station includes an adjustable pressure regulator mounted on the fill station, a pressure gauge and a toggle actuated fill valve that relieves the line pressure when released. The maximum input pressure is 6000 psi.



The four man station is designed for large fields. Two of the fill lines can be regulated to 3000 psi while the other two will be unregulated to storage pressure.



The dual fill station is made for fields or shops that need the speed of having a dedicated fill hose for 3000 psi and a second fill hose for 4500 psi. There are two gauges; one reads the regulated pressure and the other reads the tank pressure for filling 4500 psi fills. The dual station includes an adjustable pressure regulator mounted on the fill station that controls one side. Toggle actuated fill valves relieve the line pressure when released.

## 10 Year Hydro Test HP Cylinders

We are taking advantage of the latest cylinder technology available. Our new storage tanks are lightweight 4500, 5000 and 6000 psi tanks that can be filled and transported across most of the world's borders. All tanks have a 10 year hydro test interval and 25E valve inlet threads. All cylinders are designed under specification ISO 9809 - 2:200 - parts 1 & 2 and are DOT qualified.

Nuvair also offers stock and custom designed storage racks for your high pressure tanks. Vertical or horizontal racks made from heavy duty steel cradle and manifold systems are included. We also offer plumbing for storage systems in standard 6000 psi flexible hose or custom stainless steel tube. Our standard racks accommodate 6, 12, 16 or 18 tanks and custom racks can be built specifically to meet your needs.

## FEATURES

- DOT-E10869-4500/ TC-SU4369-310
- Can be used horizontal or in vertical position
- 4500 psi (310 bar) 437 cu ft
- 5000 psi (345 bar) 472 cu ft
- 6000 psi (414 bar) 510 cu ft



High Pressure Hoses  
Stock and Custom



CGA Tank Valve

Storage Regulator



# NUVAIR AIR COMPRESSOR ACCESSORIES

Nuvair manufactures a range of accessories for paintball players and fields. We have many stock tank fill adaptors for charging paintball

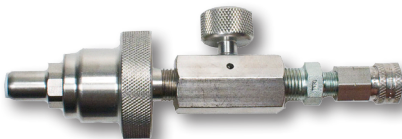
High quality, piston type, hand load regulator. Standard inlet pressure of 6000 psi regulator seat is protected by a 30 micron filter (2.25 inch diameter x 5.5 inch high). Sold with CGA 347 nut nipple for regulating storage to fill panels. Stainless gauges read storage pressure and regulated pressure.



On / Off Valve



Bleed Valve



SCBA Tank to Paintball Tank



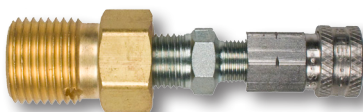
CGA Fittings



Quick Release  
Hose Ends



Steel and Stainless Steel  
Fittings-NPT, JIC and SAE



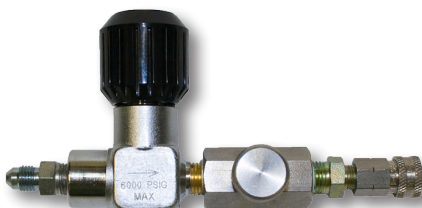
SCBA Fill Station to Paintball Tank



SCBA Tank to Paintball Tank



Interstage Pressure Gauges



Paintball fill adapter with high pressure  
on/off valve and bleed valve.



Scuba tank to Paintball  
Tank Fill Adapter



Visual CO / Moisture

## NOTES





1600 Beacon Place, Oxnard, CA 93033 USA  
phone +1 805 815 4044 | fax +1 805 486 0900  
[www.nuvair.com](http://www.nuvair.com) | [info@nuvair.com](mailto:info@nuvair.com)